

Fevik Asymmetric

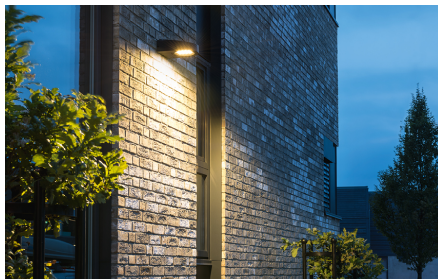


Asymmetric LED luminaire for wall mounting. Vandal resistant, versatile wall luminaire with a thin profile that suits most environments. An adjustable wall/corner attachment is available as an accessory, offering several creative solutions for lighting above doors, gates and pathways.

Fevik Asymmetric








Product- and environment images



Article codes



Article	Protection	Control gear	Mounting/Connection	Dimensions
 <p>623250</p> <p>Fevik Asymmetric Graphite</p> <p>Asymmetric 2320lm 3000K Ra>70</p> <p>On/Off</p> <p>25W LED</p> <p>93 lm/W SDCM:3</p> <p>L90/B10>100,000</p> <p>Asymmetric, Glass Clear</p>	<p>Class I</p> <p>IP65</p> <p>IK10</p>	On/Off	<p>Surface, Outdoor</p> <p>Screwless terminal block</p>	<p>L300 x W223 x H110 x</p> <p>D276</p>
 <p>623251</p> <p>Fevik Asymmetric Graphite</p> <p>Asymmetric 2470lm 4000K Ra>70</p> <p>On/Off</p> <p>25W LED</p> <p>99 lm/W SDCM:3</p> <p>L90/B10>100,000</p> <p>Asymmetric, Glass Clear</p>	<p>Class I</p> <p>IP65</p> <p>IK10</p>	On/Off	<p>Surface, Outdoor</p> <p>Screwless terminal block</p>	<p>L300 x W223 x H110 x</p> <p>D276</p>
Accessories				
 <p>623247</p> <p>Fevik Armmount Graphite</p>				W130 x H130 x D240
 <p>623248</p> <p>Fevik Graphite Pole bracket</p>				L225 x W105 x H111
 <p>623249</p> <p>Fevik Graphite Wall and corner bracket</p>				W220 x H100 x D135