

Concrete Box

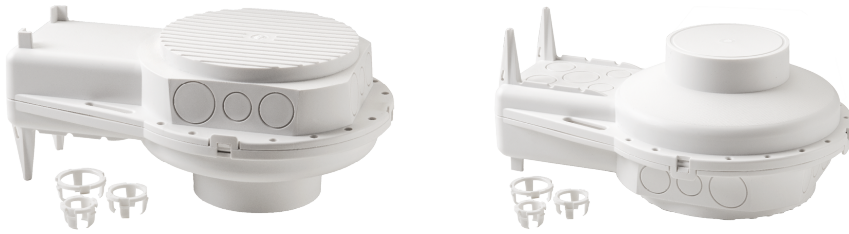


Concrete Box is used for embedding downlights. Tested and approved for SG downlights. Designed for rebar, solid PP in fire retardant V0 quality. Designed to provide a smooth casting process. Ø83 holes, for use with Junistar, Junistar ECO, Junistar Soft, and Uniled.

Concrete Box



Product- and environment images





Article	Protection	Control gear	Mounting/Connection	Dimensions
---------	------------	--------------	---------------------	------------