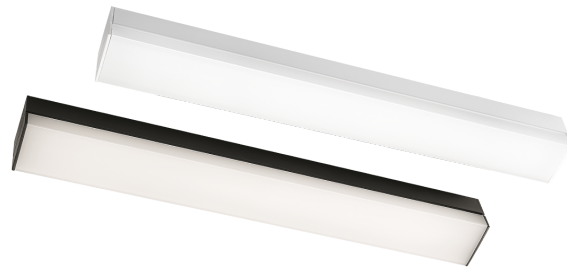


Prelude Square

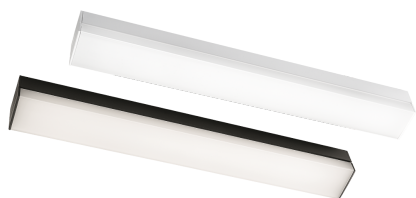


Prelude Square is a mirror luminaire with a sharp design. The luminaire provides a very homogen light generated by a specific LED lens technology, which makes it the obvious choice next to a mirror. Therefore, it's the ideal choice for bathrooms and similar environments. Prelude Square is available with or without an outlet behind a lift-up lid. The luminaire can be dimmed by trailing edge or DALI dimming. PIR versions with daylight and movement detection are also available. The light output can be adjusted by dipswitch on the driver. For the version without outlet, a cover available as an accessory. This directs the light up and down, making it ideal for settings where more indirect lighting is desired.

Prelude Square









Product- and environment images









Article codes



Article		Protection	Control gear	Mounting/Connection	Dimensions
	111384 Prelude Square Black w/ outlet 1460lm 2700K Ra>90 Trailing edge 13W LED 112 lm/W SDCM:3 L80/B10>100,000 Direct, Acrylic diffuser	Class I IP44 (mounted horizontally) / IP40 (mounted vertically) IK05	Trailing edge	Surface, Indoor Screwless terminal block	W590 x H59 x D62
	111388 Prelude Square Black 1490lm 2700K Trailing edge 16W LED 93 lm/W Direct, Acrylic diffuser	Class II IP44 (mounted horizontally) / IP40 (mounted vertically) IK05	Trailing edge	Surface, Indoor Screwless terminal block	W519 x H59 x D62
	111374 Prelude Square White 1530lm 2700K Ra>90 PIR Sensor 13W LED 118 lm/W SDCM:3 L80/B10>100,000 Direct, Acrylic diffuser	Class II IP44 (mounted horizontally) / IP40 (mounted vertically) IK05	PIR Sensor	Surface, Indoor Screwless terminal block	W615 x H59 x D62
	111378 Prelude Square White w/ outlet 1530lm 2700K Ra>90 PIR Sensor 13W LED 118 lm/W SDCM:3 L80/B10>100,000 Direct, Acrylic diffuser	Class I IP44 (mounted horizontally) / IP40 (mounted vertically) IK05	PIR Sensor	Surface, Indoor Screwless terminal block	W686 x H59 x D62
	111370 Prelude Square White 1530lm 2700K Ra>90 Trailing edge 13W LED 118 lm/W SDCM:3 L80/B10>100,000 Direct, Acrylic diffuser	Class II IP44 (mounted horizontally) / IP40 (mounted vertically) IK05	Trailing edge	Surface, Indoor Screwless terminal block	W519 x H59 x D62
	111372 Prelude Square White w/ outlet 1530lm 2700K Ra>90 Trailing edge 13W LED 118 lm/W SDCM:3 L80/B10>100,000 Direct, Acrylic diffuser	Class I IP44 (mounted horizontally) / IP40 (mounted vertically) IK05	Trailing edge	Surface, Indoor Screwless terminal block	W590 x H59 x D62

Article codes



Article	Protection	Control gear	Mounting/Connection	Dimensions
 <p>111410 Prelude Square 1200 White 2700lm 2700K Ra>90 Trailing edge 22W LED 123 lm/W SDCM:3 L90/B10>, L80/B10>100,000 Direct, Acrylic diffuser</p>	<p>Class II IP44 (mounted horizontally) / IP40 (mounted vertically) IK05</p>	Trailing edge	Surface, Indoor Screwless terminal block	W1196 x H60 x D52
 <p>111390 Prelude Square Black 1550lm 3000K Ra>90 Trailing edge 13W LED 119 lm/W SDCM:3 L80/B10>100,000 Direct, Acrylic diffuser</p>	<p>Class II IP44 (mounted horizontally) / IP40 (mounted vertically) IK05</p>	Trailing edge	Surface, Indoor Screwless terminal block	W519 x H59 x D62
 <p>111397 Prelude Square Black w/ outlet 1550lm 3000K Ra>90 Trailing edge 13W LED 119 lm/W SDCM:3 L80/B10>100,000 Direct, Acrylic diffuser</p>	<p>Class II IP44 (mounted horizontally) / IP40 (mounted vertically) IK05</p>	Trailing edge	Surface, Indoor Screwless terminal block	W590 x H59 x D62
 <p>111381 Prelude Square White 1620lm 3000K Ra>90 DALI-2 13W LED 125 lm/W SDCM:3 L80/B10>100,000 Direct, Acrylic diffuser</p>	<p>Class I IP44 (mounted horizontally) / IP40 (mounted vertically) IK05</p>	DALI-2	Surface, Indoor Screwless terminal block	W519 x H59 x D62
 <p>111382 Prelude Square White w/ outlet 1620lm 3000K Ra>90 DALI-2 13W LED 125 lm/W SDCM:3 L80/B10>100,000 Direct, Acrylic diffuser</p>	<p>Class I IP44 (mounted horizontally) / IP40 (mounted vertically) IK05</p>	DALI-2	Surface, Indoor Screwless terminal block	W590 x H59 x D62
 <p>111375 Prelude Square White 1620lm 3000K Ra>90 PIR Sensor 13W LED 125 lm/W SDCM:3 L80/B10>100,000 Direct, Acrylic diffuser</p>	<p>Class II IP44 (mounted horizontally) / IP40 (mounted vertically) IK05</p>	PIR Sensor	Surface, Indoor Screwless terminal block	W615 x H59 x D62





Article codes



Article	Protection	Control gear	Mounting/Connection	Dimensions
 <p>111379 Prelude Square White w/ outlet 1620lm 3000K Ra>90 PIR Sensor 13W LED 125 lm/W SDCM:3 L80/B10>100,000 Direct, Acrylic diffuser</p>	Class I IP44 (mounted horizontally) / IP40 (mounted vertically) IK05	PIR Sensor	Surface, Indoor Screwless terminal block	W686 x H59 x D62
 <p>111371 Prelude Square White 1620lm 3000K Ra>90 Trailing edge 13W LED 125 lm/W SDCM:3 L80/B10>100,000 Direct, Acrylic diffuser</p>	Class II IP44 (mounted horizontally) / IP40 (mounted vertically) IK05	Trailing edge	Surface, Indoor Screwless terminal block	W519 x H59 x D62
 <p>111373 Prelude Square White w/ outlet 1620lm 3000K Ra>90 Trailing edge 13W LED 125 lm/W SDCM:3 L80/B10>100,000 Direct, Acrylic diffuser</p>	Class I IP44 (mounted horizontally) / IP40 (mounted vertically) IK05	Trailing edge	Surface, Indoor Screwless terminal block	W590 x H59 x D62
 <p>111411 Prelude Square 1200 White 2860lm 3000K Ra>90 Trailing edge 22W LED 130 lm/W SDCM:3 L90/B10>, L80/B10>100,000 Direct, Acrylic diffuser</p>	Class II IP44 (mounted horizontally) / IP40 (mounted vertically) IK05	Trailing edge	Surface, Indoor Screwless terminal block	W1196 x H60 x D52
 <p>Not released yet 111383 Prelude Square White 1700lm 4000K Ra>90 DALI-2 13W LED 131 lm/W SDCM:3 L80/B10>100,000 Direct, Acrylic diffuser</p>	Class I IP44 (mounted horizontally) / IP40 (mounted vertically) IK05	DALI-2	Surface, Indoor Screwless terminal block	W519 x H59 x D62
 <p>111386 Prelude Square White 1700lm 4000K Ra>90 PIR Sensor 13W LED 131 lm/W SDCM:3 L80/B10>100,000 Direct, Acrylic diffuser</p>	Class II IP44 (mounted horizontally) / IP40 (mounted vertically) IK05	PIR Sensor	Surface, Indoor Screwless terminal block	W615 x H59 x D62

Article codes



Article	Protection	Control gear	Mounting/Connection	Dimensions
 111387 Prelude Square White w/ outlet 1700lm 4000K Ra>90 PIR Sensor 13W LED 131 lm/W SDCM:3 L80/B10>100,000 Direct, Acrylic diffuser	Class I IP44 (mounted horizontally) / IP40 (mounted vertically) IK05	PIR Sensor	Surface, Indoor Screwless terminal block	W686 x H59 x D62
 111380 Prelude Square White 1700lm 4000K Ra>90 Trailing edge 13W LED 131 lm/W SDCM:3 L80/B10>100,000 Direct, Acrylic diffuser	Class II IP44 (mounted horizontally) / IP40 (mounted vertically) IK05	Trailing edge	Surface, Indoor Screwless terminal block	W519 x H59 x D62
Accessories				
 111389 Prelude Square Black Cover				W522 x H62 x D56
 111385 Prelude Square White Cover				W522 x H62 x D56