

## Curve Graphite 530lm 4000K Ra>80 Trailing edge dimming

Article code: 623342  
 EAN: 7021986233421



### Electrical

System wattage: 7W  
 Voltage: 220-240V  
 Max. luminaires per circuit breaker: B10: 33, B16: 52, C10: 40, C16: 64

### Light technic

Type of light source: LED  
 Luminous flux: 530lm  
 Efficacy: 76 lm/W  
 Colour temperature: 4000K  
 Colour rendering (CRI): Ra>80  
 MacAdams factor: SDCM: 3  
 Lifetime: L70/B10>50,000  
 Light distribution: Direct  
 Optic: Glass Clear  
 Beam angle: 110°

### Control/Dimming

Type: Trailing edge dimming

### Protection

Luminaire class: Class I

### Energy and approvals

Contains light source of energy class: D  
 Breeam: Fulfils Hea 01 for flicker free lighting  
 BVB: Yes

### Materials and finish

Housing: Aluminium  
 Colour: Graphite  
 Optics: Tempered glass

### Mounting/Connection

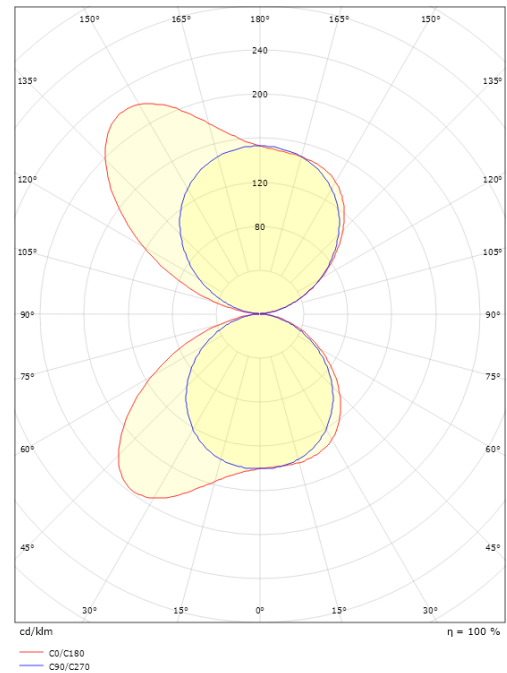
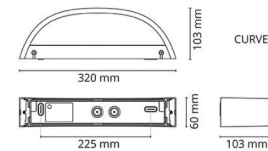
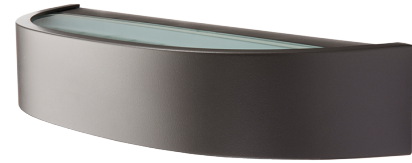
Mounting: Surface, Indoor / Outdoor  
 Connection: Screwless terminal block

### Dimensions

Width (mm) W: 320  
 Height (mm) H: 60  
 Depth (D): 103  
 Weight (kg) gross/net: 1.68 / 1.4

### Packaging

Packing dimensions (mm): 330 x 120 x 70



7 0 2 1 9 8 6 2 3 3 4 2 1