

Flom Graphite Maxi 4640lm 3000K Ra>80 PIR Sensor

Article code: 630025
 EAN: 7021986300253



Electrical

System wattage: 42W
 Voltage: 220-240V
 Max. luminaires per circuit breaker: B10: 8, B16: 12, C10: 9, C16: 13

Light technic

Type of light source: LED
 Luminous flux: 4640lm
 Efficacy: 110 lm/W
 Colour temperature: 3000K
 Colour rendering (CRI): Ra>80
 MacAdams factor: SDCM: 3
 Lifetime: L80/B50>50,000
 Minimum ambient temperature: -25°C
 Light distribution: Direct
 Optic: Glass Frosted
 Beam angle: 100°
 Visible flicker (PstLM): 0.12
 Stroboscopic flicker (SVM): 0.02

Control/Dimming

Type: PIR Sensor

Protection

Luminaire class: Class I

Energy and approvals

Contains light source of energy class: C
 Breeam: Fulfils Hea 01 for flicker free lighting

Materials and finish

Housing: Aluminium
 Colour: Graphite
 Optics: Tempered glass

Mounting/Connection

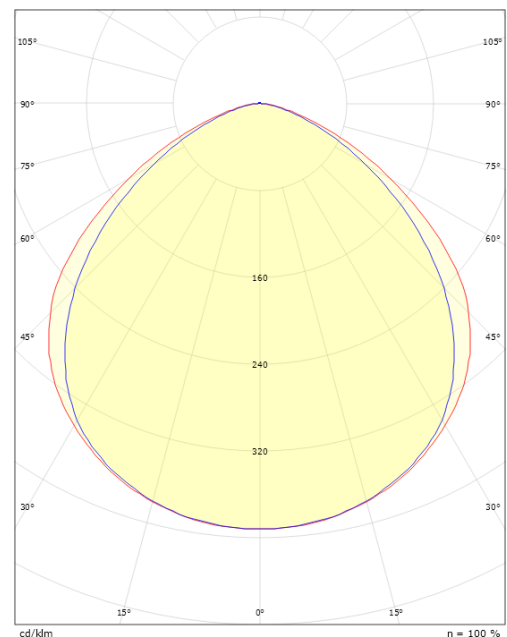
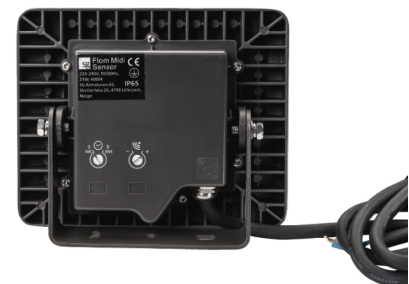
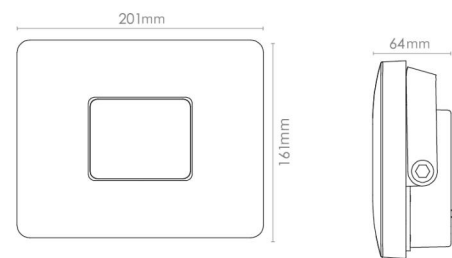
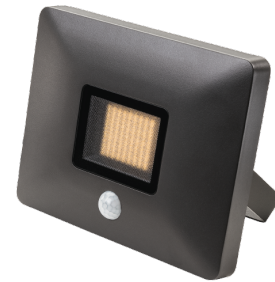
Mounting: Surface, Outdoor
 Cable: Cable 1.5m

Dimensions

Length (mm) L: 200
 Width (mm) W: 160
 Height (mm) H: 64
 Weight (kg) gross/net: 1.777 / 1.615

Packaging

Packing dimensions (mm): 210 x 80 x 200



cd/km
 — C0/C180
 — C90/C270



7 0 2 1 9 8 6 3 0 0 2 5 3